

## Kitchen Trash Can Lid

Somebody giant's power with empty head opened the lid manually and wildly. The consequence is clear. The lid has been miserably broken and stays closed all the time.

The most valuable feature of this kitchen trash can is that the lid can automatically open and shut by utilizing motion sensor. Due to implementing the feature, the can does not have a foot pedal at bottom to open the lid as most regular kitchen trash cans have. A trash can which is always closed is useless.



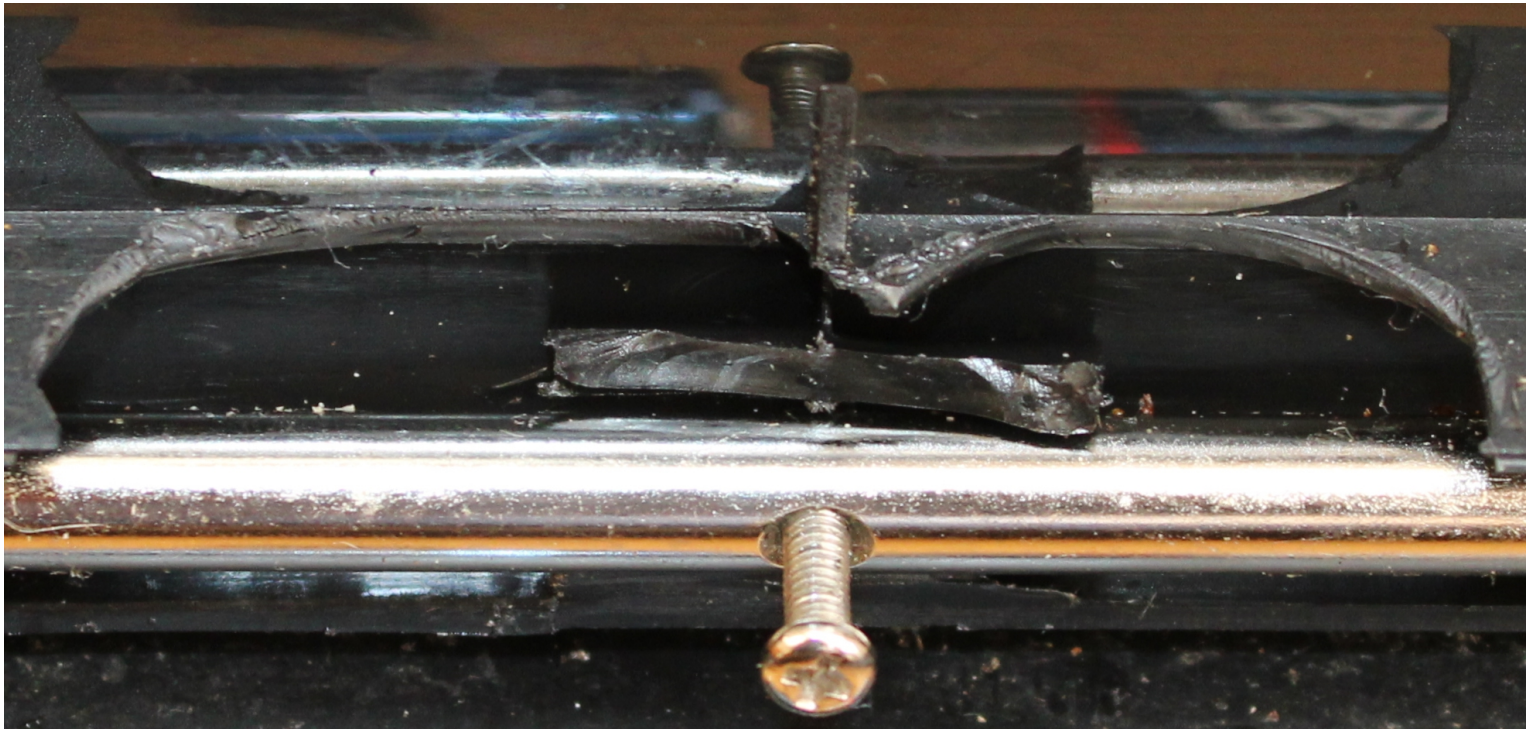
Kitchen trash can with automatic lid opening and closing function (No foot pedal)





Fragile plastic support cracked and broken apart (Remove two batteries to stop metal rod rotation first)



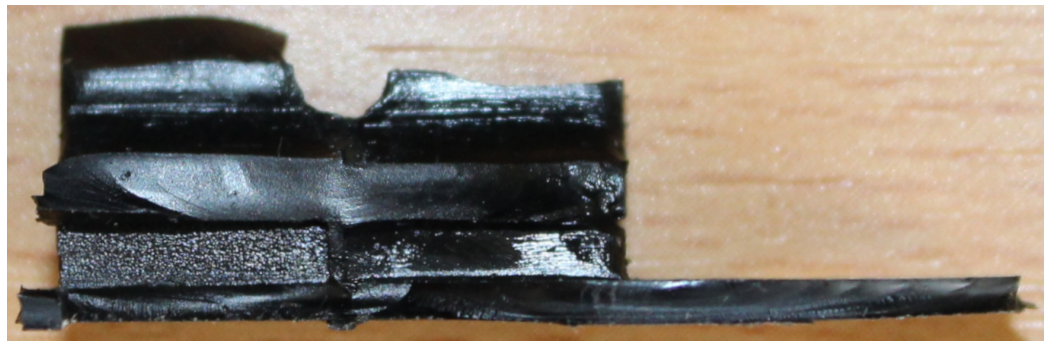


Breaking surface

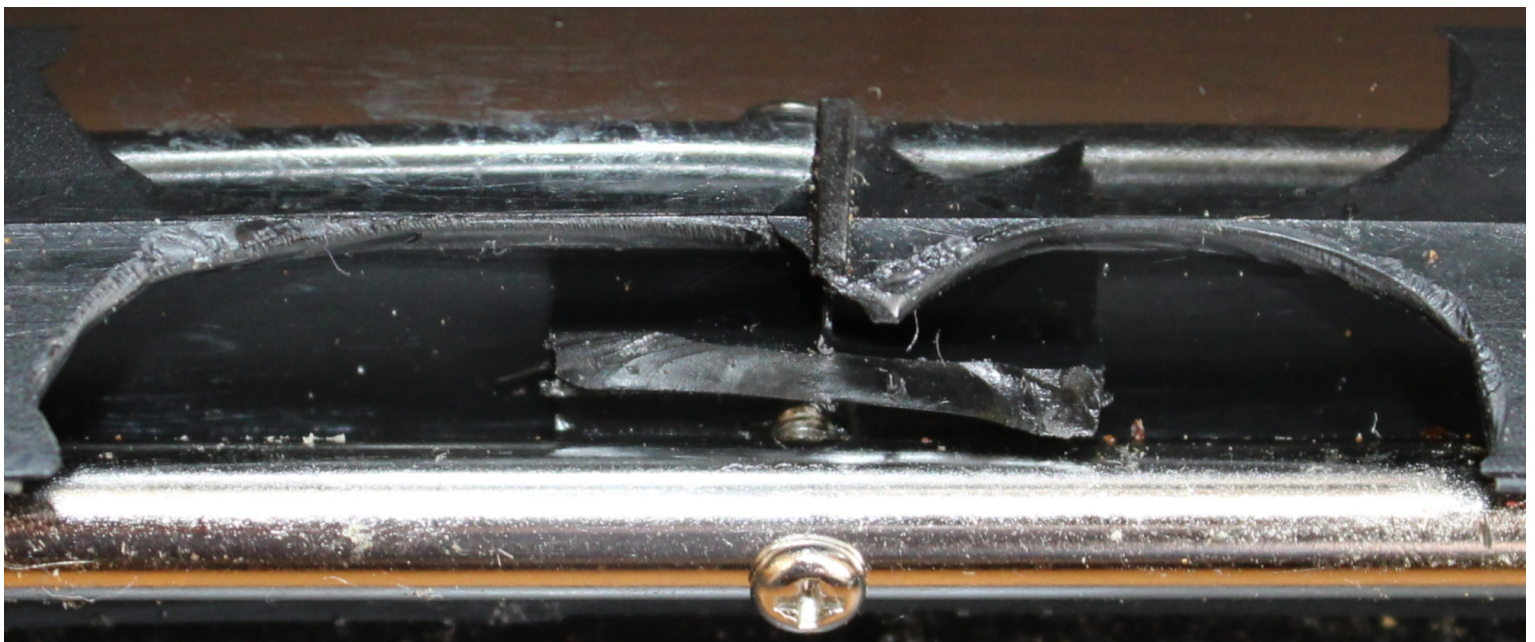
Half bolt hole →

Put adhesive →

Put adhesive →

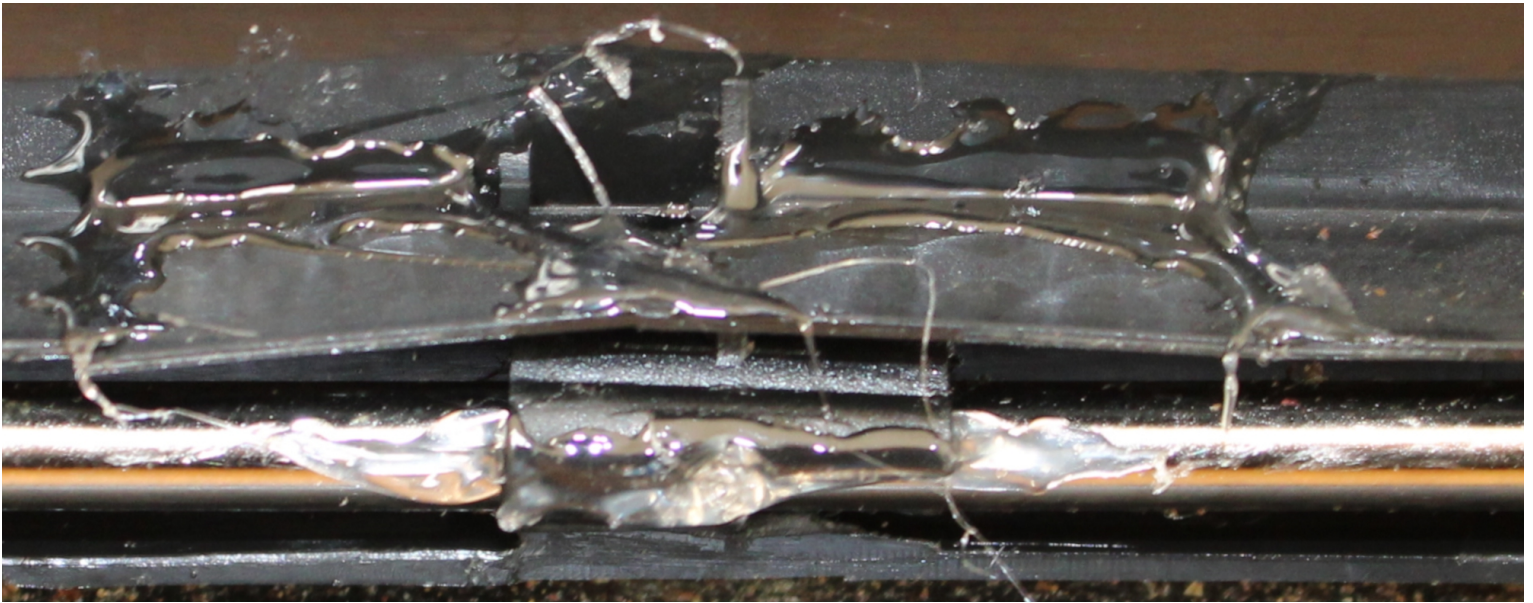


One of separated pieces (Bolt hole seen above)



Rotating bolt seems to be able to adjust the lid opening angle but the function is negligible





Metal rod, bolt, and plastic lid must be bonded together.  
Rough bonding as seen here done by E6000 is allowed. No bonding expertise is required.



B-7000 liquid adhesive with metal needle outlet for narrow space bonding  
&  
E6000 for rough open space bonding

[Watch a short video](#) which shows the lid opening and closing.